

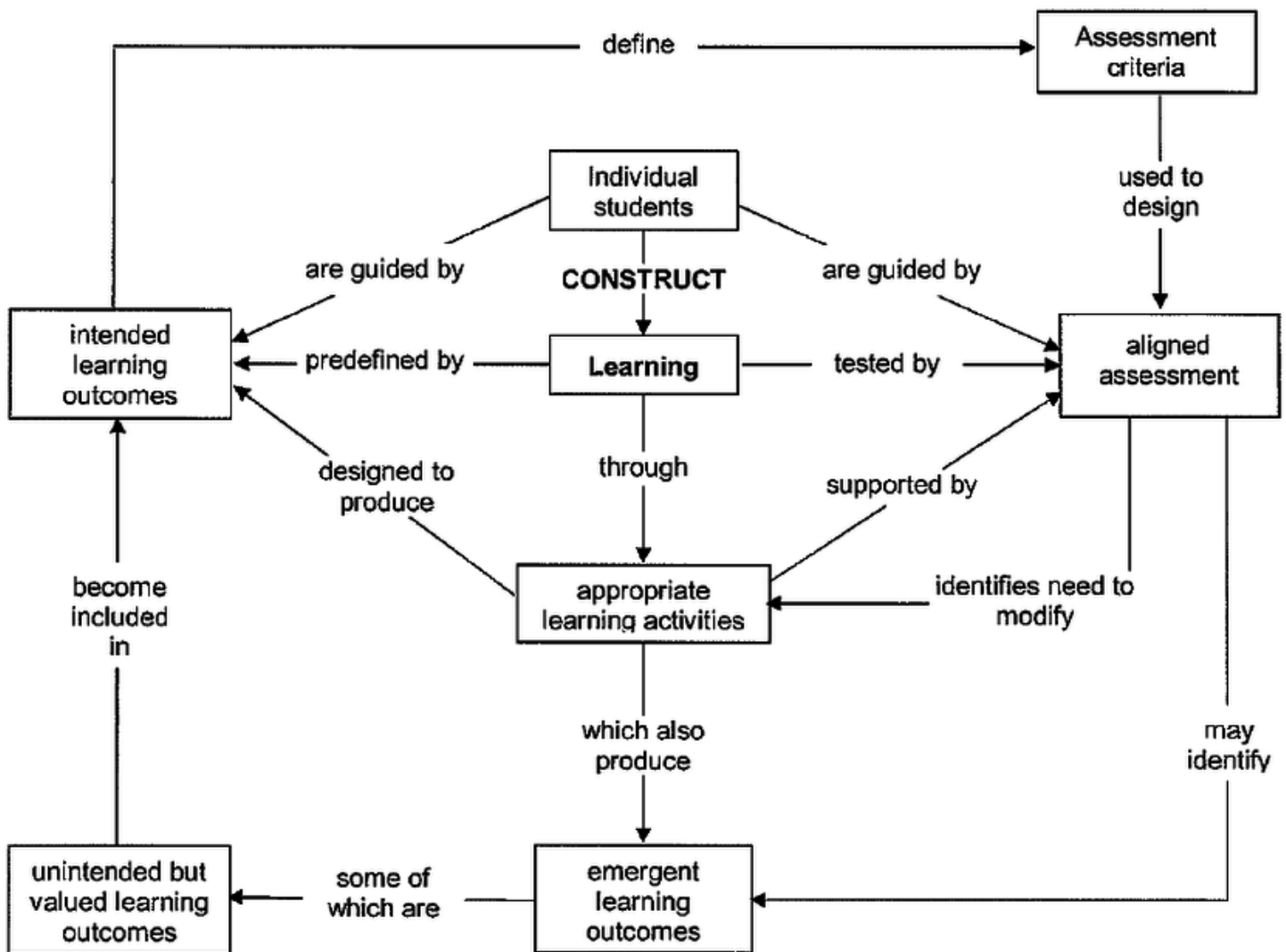


Internationalising Course Design

Activity 1 Baseline Ice Breaker activity

Worksheet Hattie Framework

For the first activity you have put together the concept map of Hattie (2009), illustrating the main ideas (constructive alignment) put forward by Biggs (1996). In the figure below you will see the concept map as developed by Hattie (2009).





References

Biggs, J. (1996). Enhancing teaching through constructive alignment. *Higher education*, 32(3), 347-364.

Hattie, J. (2009). The black box of tertiary assessment: An impending revolution. *Tertiary assessment & higher education student outcomes: Policy, practice & research*, 259-275.

version June 2019



The European Commission support for the production of this publication does not constitute an endorsement of the contents which reflects the views only of the authors, and the Commission cannot be held responsible for any use which may be made of the information contained therein.



You are free to share, copy, redistribute and build upon this work provided that a clear reference to the source is given, which is:
www.equiiip.eu